

Deviance

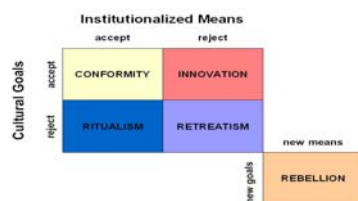
Ryan Cragun – Summer, 2005

What is deviance?

- violation of cultural norms
- informal deviance – picking your nose
- formal deviance (crime) – theft
- Is deviance just negative violations of cultural norms?
- culturally relative
 - Christ Desert Monastery

Merton's deviance typology

Robert K. Merton's Deviance Typology

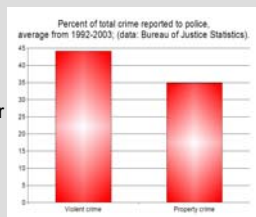


Structural-Functionalism

- affirms cultural values and norms
- clarifies moral boundaries
- promotes social unity
- encourages social change (odd perspective for structural functionalism to take)

Conflict Theory

- Laws reflect interests of the wealthy and powerful
- Powerful can resist deviant label
- wealthy commit property crime; poor commit violent crimes – penalties are harsher

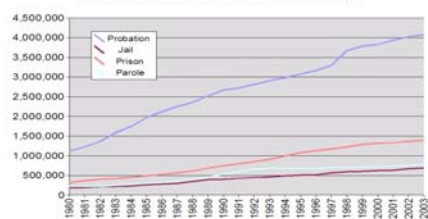


Labeling Theory

- a deviant label is applied
- the label is adopted by exhibiting the behaviors, actions, and attitudes associated with the label
- retrospective labeling
- stigma

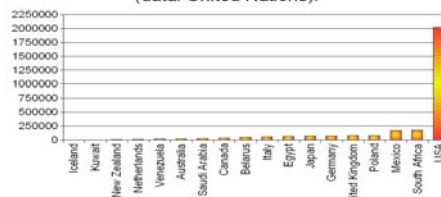
crime statistics

Correctional populations in the U.S., 1980-2003; (data: Bureau of Justice Statistics).



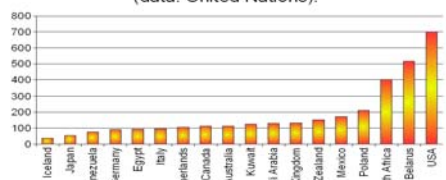
crime statistics

Comparison of International Incarceration Numbers, total people in prison; selected countries, 2002; (data: United Nations).



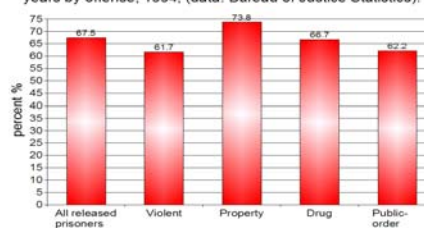
crime statistics

Comparison of International Incarceration rates per 100,000 people; selected countries, 2002; (data: United Nations).



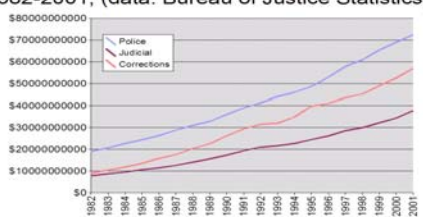
crime statistics

Percent of released prisoners rearrested within 3 years by offense, 1994; (data: Bureau of Justice Statistics).



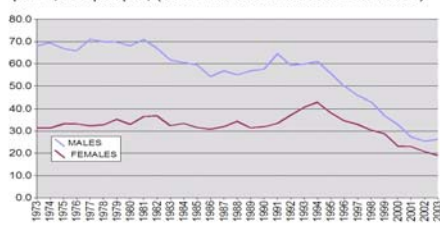
crime statistics

Direct expenditures by criminal justice function, 1982-2001; (data: Bureau of Justice Statistics).

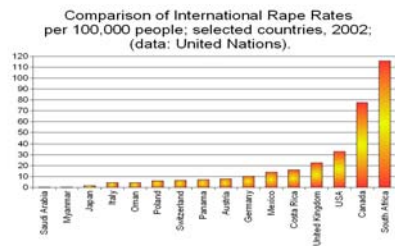


crime statistics

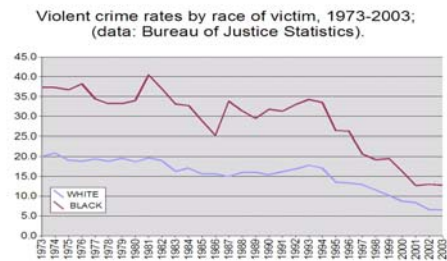
Violent crime rates by gender 1973-2003, per 1,000 people; (data: Bureau of Justice Statistics).



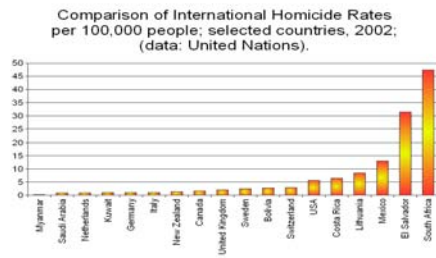
crime statistics



crime statistics



crime statistics



Social Controls

- Retribution
- Deterrence
- Rehabilitation
- Societal Protection
- Do they work?
- Which do we employ in the U.S.?